

FISCAL YEAR	Job Number	SHEET No.	TOTAL SHEETS
1927	956	1	3
Part of B.B. Co. File No. 10517-C-31			

STATE OF ARKANSAS  
STATE HIGHWAY DEPARTMENT

**PLAN OF PROPOSED BRIDGE**  
**OVER**  
**BUFFALO FORK**  
**MT. JUDEA - WESTERN GROVE**  
**NEWTON COUNTY**  
**ROUTE 103 SEC. 1**  
**JOB No 956**  
**FEDERAL AID PROJECT No.**

**INDEX OF SHEETS**

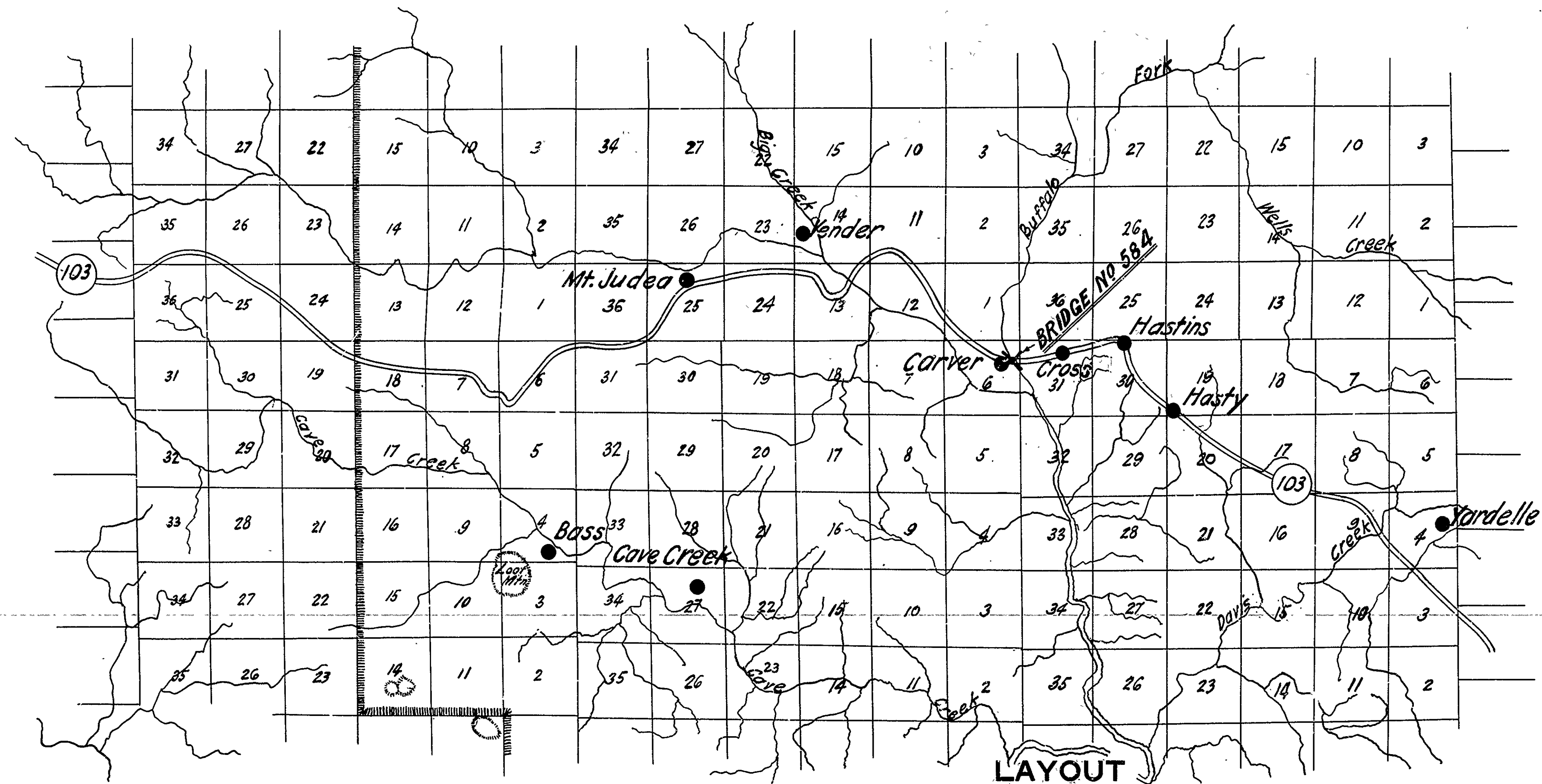
SHEET No.	DRWG. No.	TITLE OF SHEETS
1.	631	Title Sheet
2.	632	Layout
3.	633	Details of Approach

**QUANTITIES**

Item No.	Amount
51. Cleaning and Painting Steel Span	Lump Sum
52. Untreated Bridge Timber	68,364 M. Ft. B.M.
66. Untreated Timber Piling	1898 Lin. Ft.

**ALTERNATE QUANTITIES**

Item No.	Amount
51. Cleaning and Painting Steel Span	Lump Sum
52. Untreated Bridge Timber	4,204 M. Ft. B.M.
52. Treated " "	64,160 " "
67. " Timber Piling	1898 Lin. Ft.



**LAYOUT**  
Scale:  
GROSS LENGTH OF PROJECT 544'-4" = 0.103 Miles  
NET LENGTH OF PROJECT 544'-4" = 0.103 Miles

Revised 2/10/26 Alternate Quantities - C.A.D.

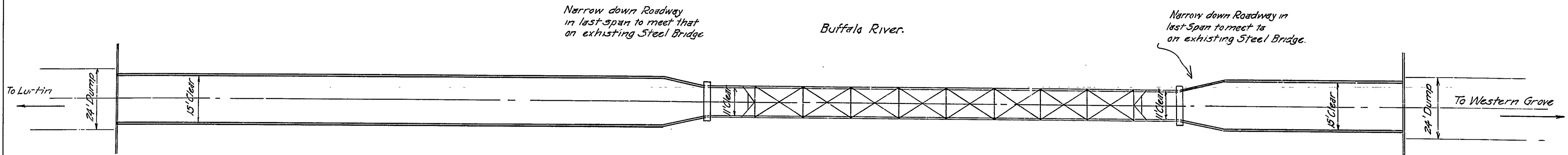
M.B. Lantz  
BRIDGE ENGINEER

BRIDGE No. 584

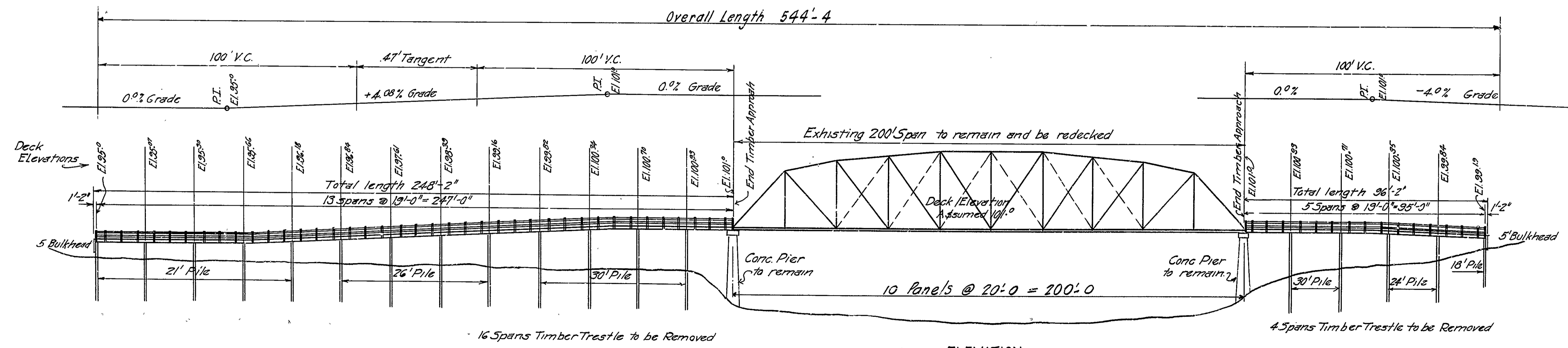
DRAWING No. 631

APPROVED  
COMMISSIONER - STATE LANDS, HIGHWAYS AND IMPROVEMENTS  
  
APPROVED  
STATE HIGHWAY ENGINEER  
  
RECOMMENDED FOR APPROVAL  
DISTRICT ENGINEER - U.S. BUREAU OF PUBLIC ROADS  
  
RECOMMENDED FOR APPROVAL  
CHIEF ENGINEER - U.S. BUREAU OF PUBLIC ROADS  
  
APPROVED  
DIRECTOR - U.S. BUREAU OF PUBLIC ROADS

FISCAL YEAR	Job No.	SHEET NO.	TOTAL SHEETS
1927	956	2	3
BRIDGE OVER BUFFALO RIVER, D.W. 632			



PLAN  
Bridge 584



ELEVATION  
Scale: 1"=20'

Note:-  
Deck Elevation of Steel Span assumed 101.0'

NOTE:  
Clean steel span and paint two coats as per Ark. Specif. 5/30/25  
Tighten all loose, adjustable members.

For Details see Drawing No 633  
Lengths of Piling shown are assumed for estimating quantities only. Actual lengths to be determined in field.

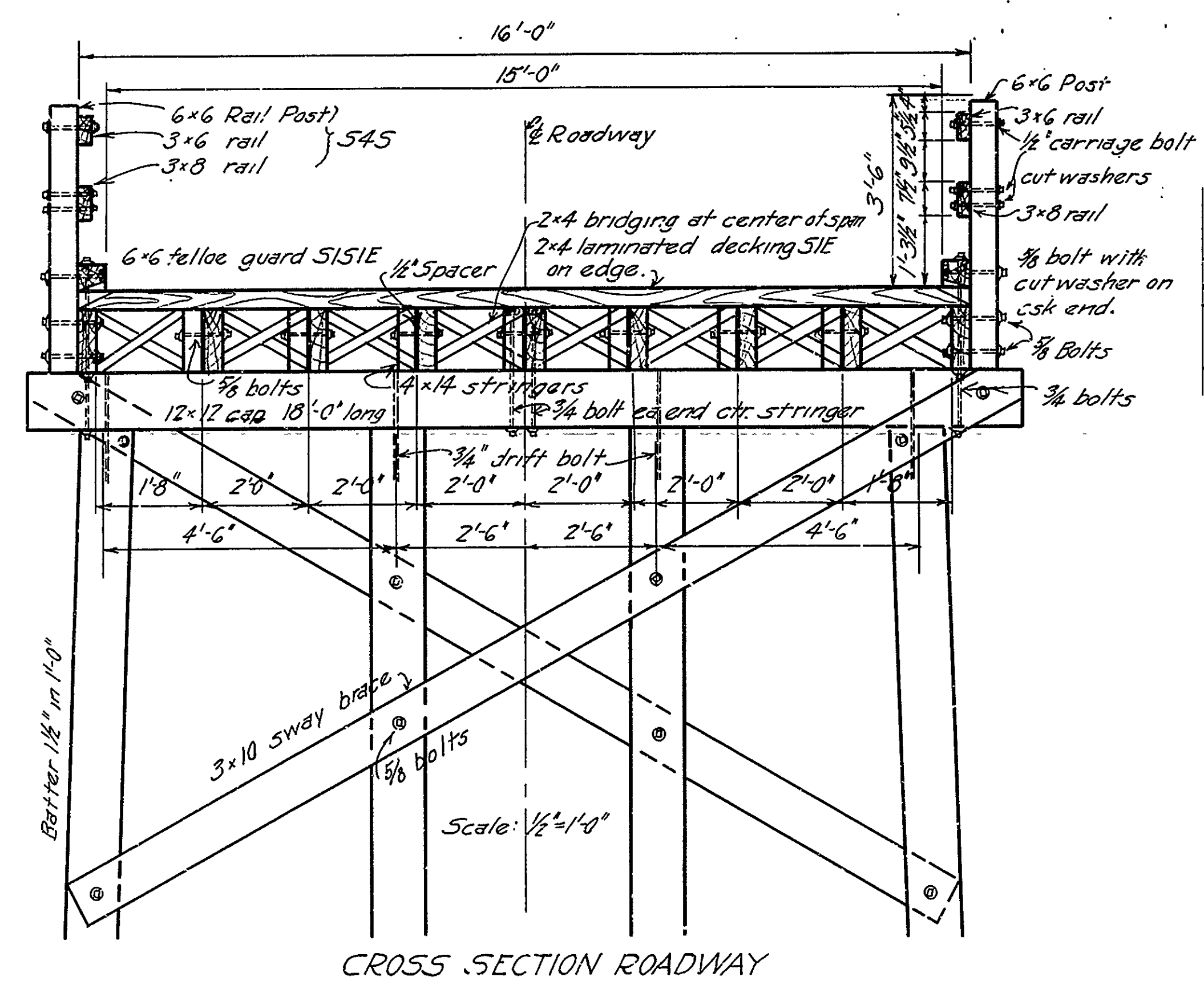
LAYOUT  
BRIDGE OVER BUFFALO RIVER  
WESTERN GROVE-LURTIN ROAD NEWTON CO.  
ROUTE 103 SEC. 1  
ARKANSAS STATE HIGHWAY DEPARTMENT  
LITTLE ROCK, ARK.  
Scale: 1"= 20 ft.  
DRAWING NO. 632

Revised 2/10/24 Clear Rwy width by C.A.R.

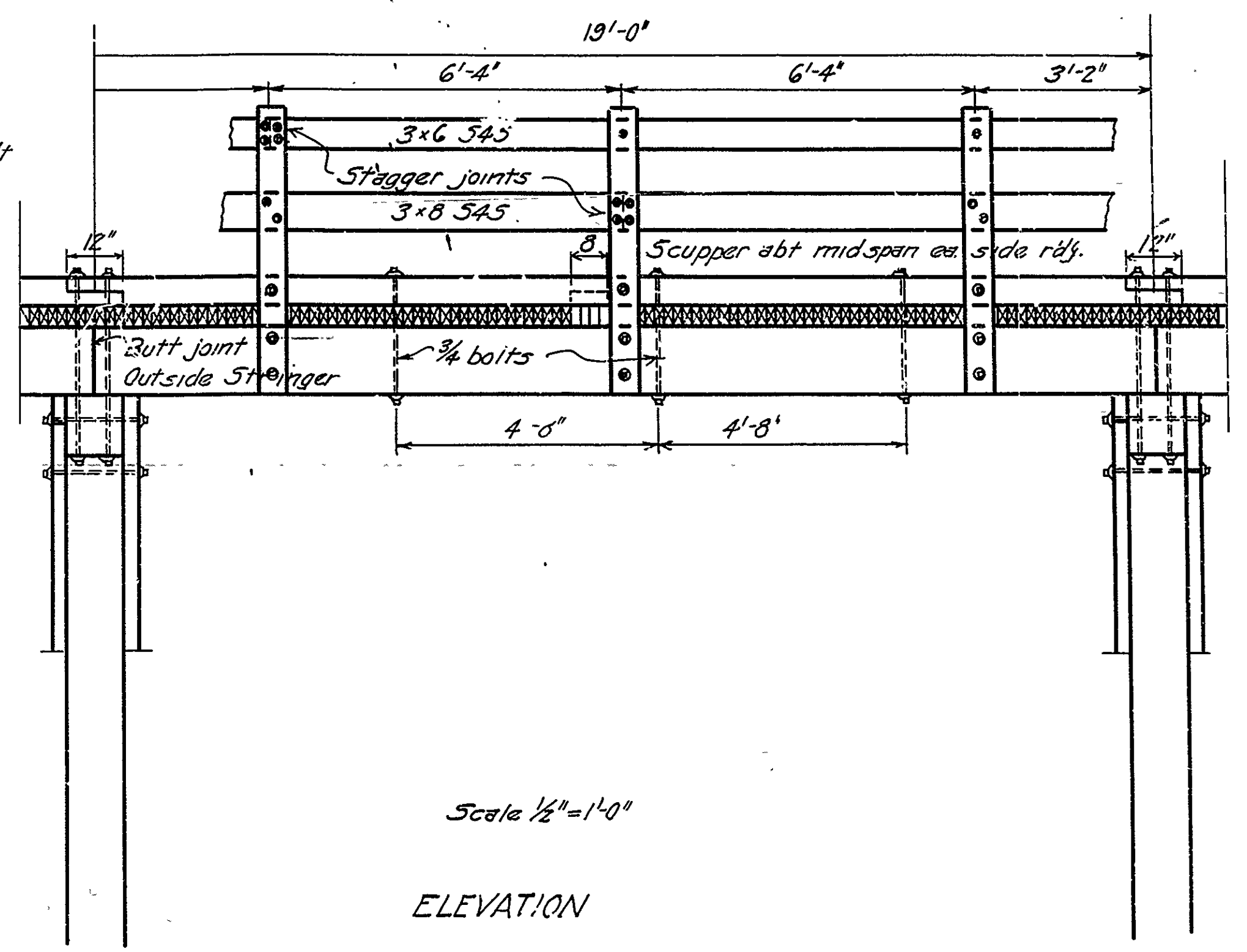
M.B. Gannett  
BRIDGE ENGINEER

Drawn By: CAD Date: 2/2/24  
Traced By: Date:   
Checked By: Date:   
BRIDGE No. 584

FISCAL YEAR	Job Number	SHEET NO.	TOTAL SHEETS
1927	956	3	3
T.M. APP'Y DEC. B. FALL. P. BR. DN. 233			



CROSS SECTION ROADWAY



Scale 1/2" = 1'-0"

ELEVATION

Each stringer to be spiked to caps with 4-40d spikes, and to be sized at bearing point in field. 2x4 laminated decking S1E. Each piece to be nailed to each adjacent piece once between each stringer with 30d spike. Alternate pieces nailed to alternate stringers, with 20d spikes. Each piece nailed to alternate stringers.

Use sway bracing on bent 5'-0" or over. Use malleable or cast iron washers on both ends of machine bolts unless otherwise noted.

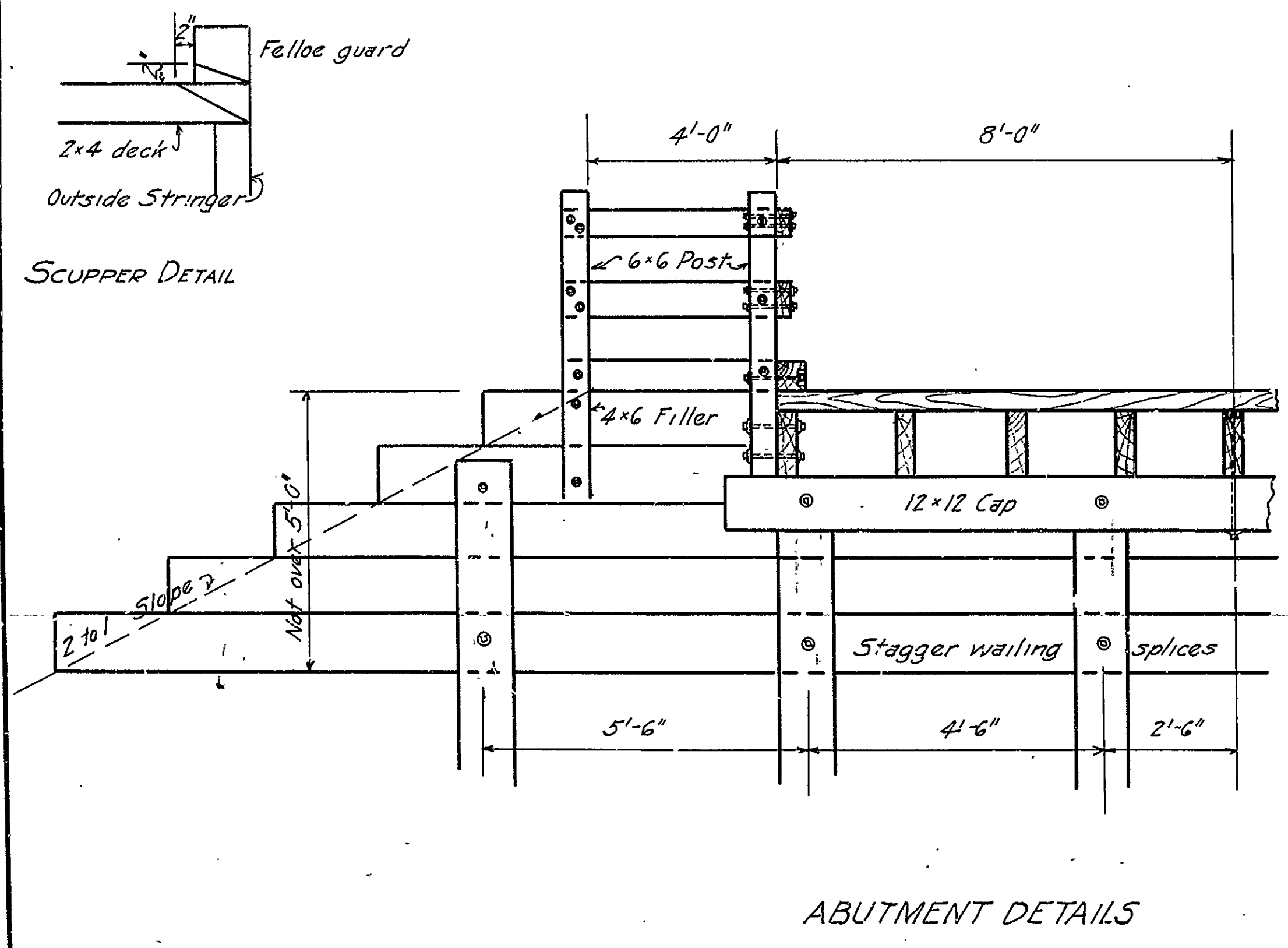
All timber and piling untreated. Rail members and posts painted 3 coats as per paragraph 52.3(e) Ark. Specifications.

**SPECIFICATIONS**  
Arkansas State Road and Bridge Specifications adopted May 30, 1925

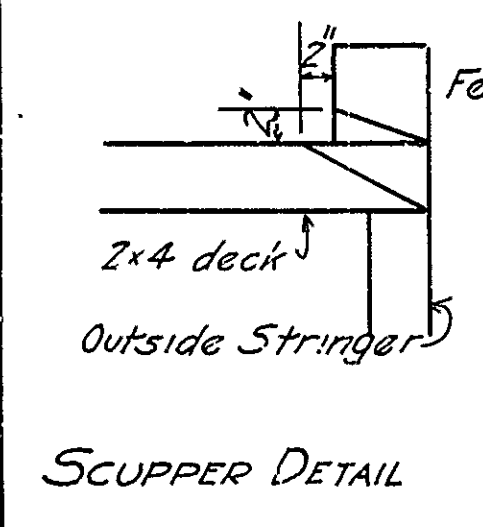
**ALTERNATE ~ TREATED TIMBER**

All timber and piling except 3x6 and 3x8 rail members to be treated. Handrail shall be made of untreated, seasoned dressed lumber and shall be painted with 3 coats of paint in accordance with paragraph 52.3 (a) of Ark. Specif.

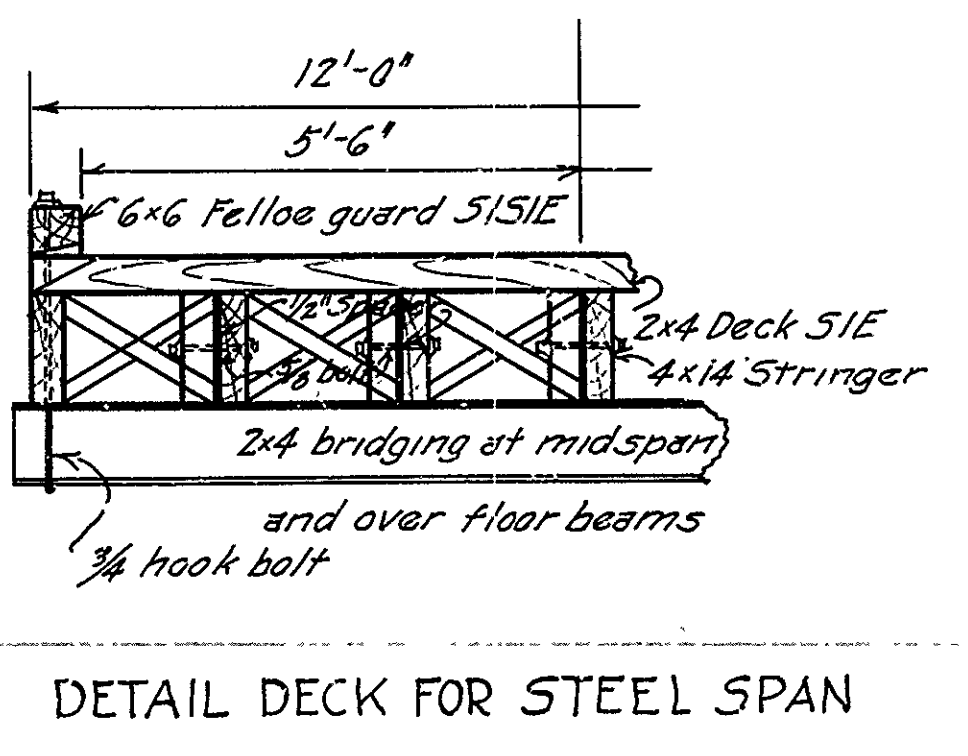
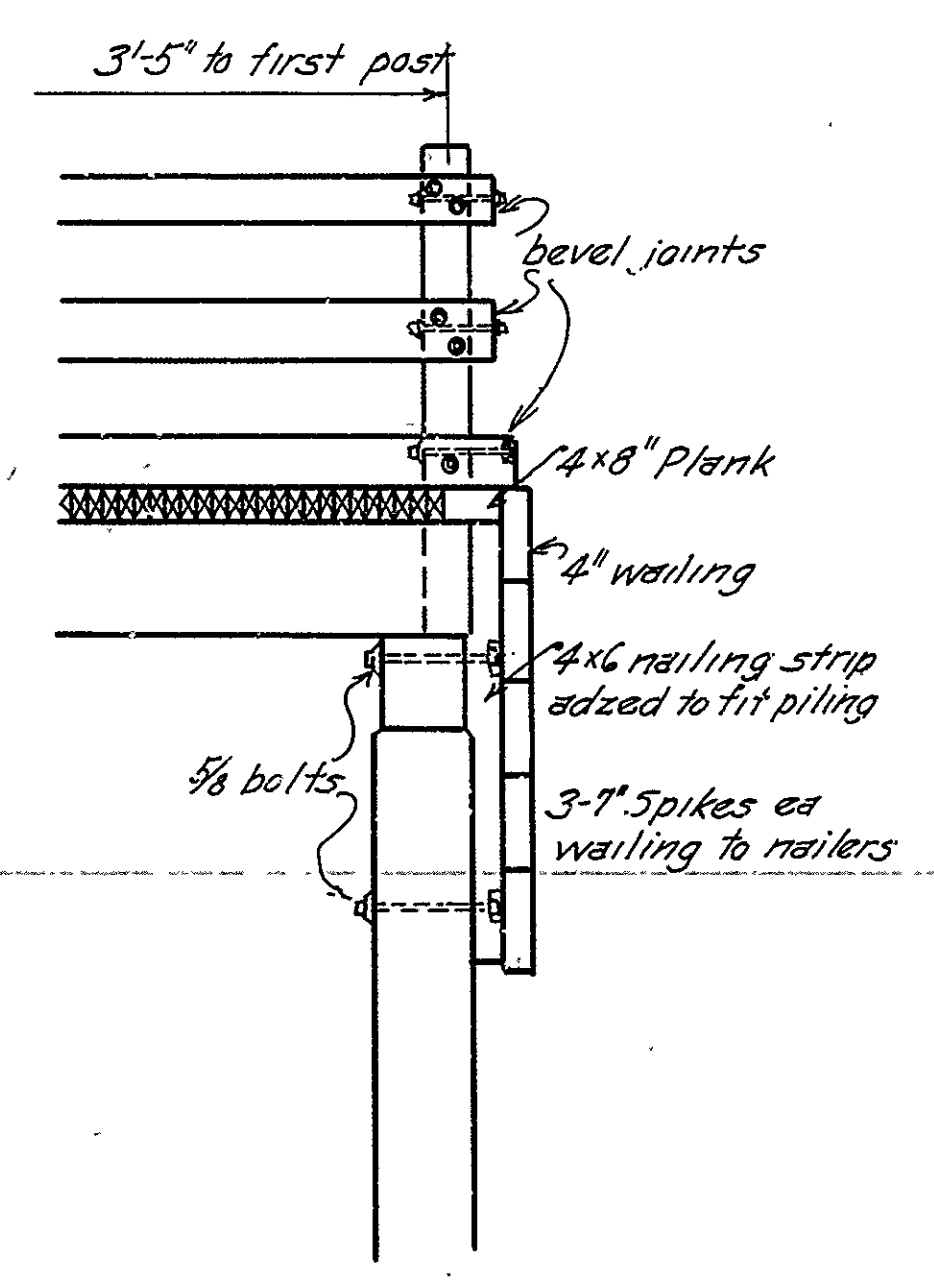
All treated timber and piling to be treated by empty cell process in accordance with paragraph 52.2(d) Ark. Specif. 5/30/25



ABUTMENT DETAILS



SCUPPER DETAIL



DETAIL DECK FOR STEEL SPAN

Revised 2/10/26 Revised for treated timber (E.A.P.)

DETAILS  
TIMBER APPROACH AND DECK  
BRIDGE OVER BUFFALO RIVER.  
WESTERN GROVE-LURTON ROAD NEWTON CO.  
ROUTE 103 SEC. 1  
**ARKANSAS STATE HIGHWAY DEPARTMENT**  
LITTLE ROCK, ARK.

Drawn By: \_\_\_\_\_ Date: \_\_\_\_\_  
Traced By: \_\_\_\_\_ Date: \_\_\_\_\_  
Checked By: \_\_\_\_\_ Date: \_\_\_\_\_  
BRIDGE No. 584  
Scale: in. = ft.  
DRAWING No. 633

M.B. Garner  
BRIDGE ENGINEER